



BLUESTEM BULLETIN

Kansas Section, SOCIETY FOR RANGE MANAGEMENT, Newsletter
To Foster Advancement in The Art Of Grazing Land Management

Volume 21, No. 2

September, 2012

PRESIDENT'S CORNER

Jordge LaFantasie

President, Kansas Section, SRM

As fall approaches, I'm sure we're all looking forward to some cooler weather, the hope for precipitation, and, the Kansas Section of the Society for Range Management fall meeting! Our meeting is scheduled for Thursday, October 25th at the Kansas Wetlands Education Center near Great Bend. I'll keep this letter brief so you have adequate time to peruse the flyer and make plans to attend!

You will notice we have a poster session planned over lunch at the Kansas Wetlands Education Center...this poster session is a great way to tell the Section and other attendees about your work, ideas, successes, failures, research results, accomplishments...anything! I strongly encourage you to submit a poster. Research posters are welcome and encouraged; however, this session is not restricted to "science." If you know of an operation that is doing good things for rangeland conservation, honor their work with a poster and submit it for the Excellence in Range Management award (contact Rebecca Bergkamp beccabergkamp@yahoo.com for information). If you have photos of interest (responses to novel management practices, for example), put together a photo essay in poster format. The poster session is a great way to communicate your accomplishments, mistakes, research results, ideas, etc to the Section. Please send in your ideas! An official call for poster summaries can be found in this Bluestem Bulletin, and will be sent out via email.

We have also scheduled a tentative time for high school student youth forum competitors. The KS Section has not been representative by a high school delegate at the Annual Meeting in a while...it

would be great to get a student to the meeting in Oklahoma City this winter! If you know a high school student that can compile and present information on a topic relevant to range management in Kansas, please encourage them to enter! For information about the High School Youth Forum, contact Toni Flax toni.flax@ks.usda.gov or Dusty Tacha dusty.tacha@ks.usda.gov.

In closing, I hope to see everyone at the fall meeting for a fabulous exchange of ideas and a tour of the Cheyenne Bottoms area!

Sericea Lespedeza Control

Late summer/fall is an excellent time to spray sericea lespedeza, especially if plants are actively growing and flowering. Spot treatment with Remedy Ultra and PastureGard can still be effective, but products containing metsulfuron may be more consistent this time of the year. These include Cimarron Plus, Escort XP, and Chaparral. The key is to spray sericea lespedeza before the seeds begin to fill. Stop seed production if at all possible.

Walt Fick

On the Inside

- Range Youth Camp Memories
- Excellence in Rangeland Management Tour
- Kansas Section, SRM Meeting and Tour

**KANSAS SECTION
SOCIETY FOR RANGE MANAGEMENT
BOX 303 - MANHATTAN, KS 66505**

<http://ks.rangelands.org>

Jordge LaFantasie	President
Chris Tecklenburg	First Vice-President
Dusty Tacha	2nd Vice-President
Jamie Holopirek	Director
Glenn Brunkow	Director
Kevin Parsons	Director
Myra Richardson	Director
Alex Miller	Secretary-Treasurer
Cade Rensink	Past President
Livia Olsen	Webmaster
Jessica Casey	Historian
Walter Fick	Newsletter Editor

Range Youth Camp Memories

June 26-29



Learning about soils



Crossing the river

EDITOR'S COMMENTS

I would encourage you to join or renew your membership with SRM. Forms are available at <http://www.rangelands.org> or if you have questions e-mail srm@allenpress.com or call (800) 627-0326.

Members or other readers are encouraged to submit information to include in the Bluestem Bulletin. Announcements regarding meetings, field days, etc. are welcome. If you would like to write an article related to rangeland management please do so and send it to me at whfick@ksu.edu.

Submission deadline for the next issue of the Bluestem Bulletin: November 1, 2012



2012 Kansas Range Youth Camp

Excellence in Rangeland Conservation Tour

September 13, 2012 10:00 - 3:00

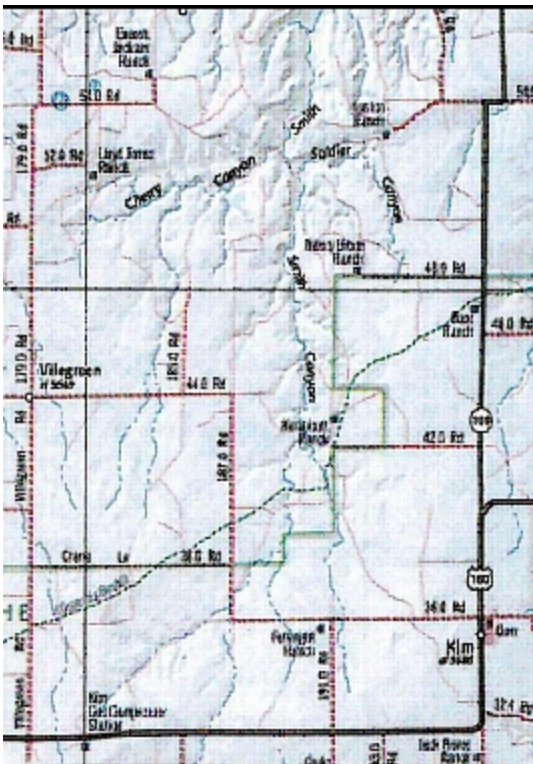
Jackson Ranch, Villegreen, CO



See the results of management strategies and practices to benefit livestock and wildlife including grazing management, mechanical brush clearing, prescribed fire, and using livestock to re-vegetate old cropland fields without reseeding.

LODGING information in La Junta:

Hampton Inn	Holiday Inn Express	Super 8
27800 West Hwy 50	27994 West Hwy 50	27882 Frontage Rd (West Hwy 50)
(719) 384-4444	(877) 410-6679	(719) 384-4408



Colorado Section SRM Board Meeting Wed, September 12th 6:00-8:00 PM at Felisa's Mexican Restaurant 27948 Frontage Road (West Hwy 50) La Junta (719) 384-4814

SUMMER TOUR Thursday, September 13th, at Jackson Ranch, Villegreen, CO (west of Kim) \$20.00 registration includes lunch provided at the ranch by the Branson-Trinchera Conservation District, RSVP Jonnalea (719) 846-3681 by Monday, September 10th.. NOTE: 2 Range CEU's available

Directions: From the intersection of State Highway 160 and Las Animas county road 179 (Between mile markers 403 and 404, about 12 miles west of the inter-section of Highway 109 and Highway 160) turn North on 179 about 11 miles to Las Animas county road 54. Turn east on 54 and travel about 3.5 miles and the road will make a turn to the north and go to the Jackson Ranch Headquarters.



Kansas Section for the Society for Range Management

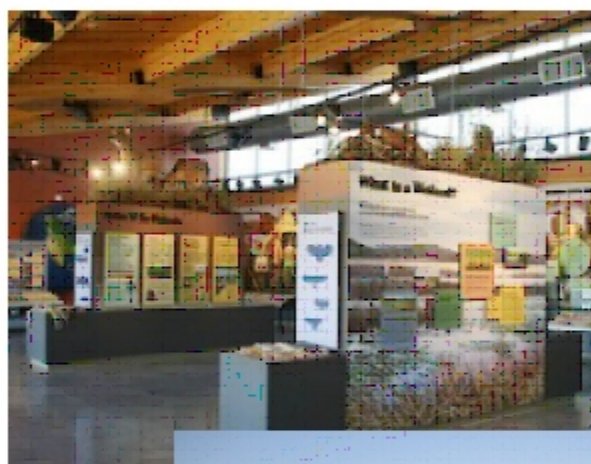
Thursday, October 25th, 2012
9 am—5 pm, Kansas Wetlands Education Center and Cheyenne Bottoms

Fall Meeting

Join us for an informative poster session, lunch and a tour of the largest inland marsh in the United States, all at the Kansas Wetlands Education Center!

Highlights

- Business Meeting
- High School Youth Forum Presentations
- Poster Session
- Lunch
- Van tour of Cheyenne Bottoms
 - Migratory Bird Viewing
 - Discussion of Fire, Grazing and other Management Tools used on Cheyenne Bottoms
 - Current Small Mammal, Vegetation and Grassland Bird Research on the Bottoms



FORT HAYS STATE UNIVERSITY'S
KANSAS WETLANDS
EDUCATION CENTER

<http://wetlandscenter.fhsu.edu/>

Registration fee (includes lunch and guided tour):

SRM Members: \$15

Non-Member: \$20

See reverse for registration, map, directions and further information



Driving Directions to the Kansas Wetlands Education Center:

From US-56 east bound, travel 3.5 miles East of Great Bend, KS on US-56. Then, travel northeast 6.5 miles on K-156 Highway to the KWEC.

From US-56 westbound, travel 7 miles West of Ellinwood, KS on US-56. Then, travel northeast 6.5 miles on K-156 Highway to the KWEC.

From I-70 west bound, take exit 225 and follow K-156 southwest approximately 40 miles to the KWEC.

From I-70 east bound, take exit 184 and follow US-281 south approximately 23 miles South to K-4 Highway, go east on K-4 through Hoisington, KS, 15 miles to NE 100 Ave. Go South 4 miles to K-156. Go 3 miles southwest on K-156 to the KWEC. (Follow the road signs for the Wetlands & Wildlife National Scenic Byway from Hoisington, KS.)

Registration

Thank you for registering for the Annual Kansas Section SRM fall meeting! Registering in advance will allow us to ensure the proper number of tour vans and lunches. If you have questions regarding registration, please contact Jorge LaFantasie at 785-628-4269 or jjlafantasie@fhsu.edu

Full Name _____

Name as you would prefer it on a name tag _____

Email (for receipt) _____

If you would like a hardcopy receipt prior to the meeting, please provide your mailing address:

Will you be presenting a poster at the poster session? Yes _____ No _____

Registration for (please circle one):	SRM Member	\$15
	Non-Member	\$20
	Total enclosed	\$ _____

Please return this form and a check made out to Kansas SRM to:
 Jorge LaFantasie, Dept. of Biological Sciences, 600 Park St. Hays, KS, 67601

If you prefer to use Paypal, please contact me (information above).

For more information about the Society for Range Management: www.rangelands.org
 For more information about the Kansas Section of the Society for Range Management: <http://ks.rangelands.org/>
 For more information about the Kansas Wetlands Education Center: <http://wetlandscenter.fhsu.edu/>
 For more information about Cheyenne Bottoms:
<http://www.kdwpt.state.ks.us/news/KDWPT-Info/Locations/Wildlife-Areas/Region-3/Cheyenne-Bottoms/>

CALENDAR OF EVENTS

September 12-13	Eastern Kansas Grazing School, Emporia, KS
September 13	Excellence in Rangeland Conservation Tour, Jackson Ranch, Villegreen, CO
September 26	Kansas Prescribed Fire Council, Wichita, KS
September 27	KSU Beef Stocker Field Day, Manhattan, KS
October 16-17	Kansas Grazing Land Coalition Meeting, Russell, KS
October 25	Kansas Section, Society for Range Management Meeting, Kansas Wetlands Education Center, Cheyenne Bottoms
January 24-25, 2013	Kansas Natural Resources Conference, Wichita, KS
February 2-8, 2013	2013 SRM Annual Meeting, Technical Training, and Tradeshow, Oklahoma City, OK